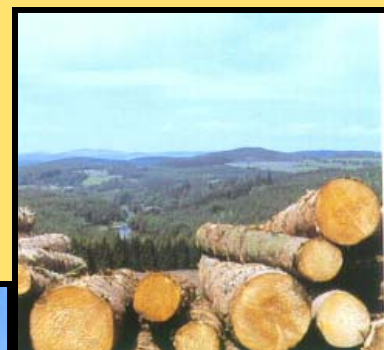


South West England Woodland and Forestry Strategic Economic Study

Final Report

Prepared for the South West Regional
Development Agency
and the
Forestry Commission
by
Land Use Consultants
Eamonn Wall & Co
Atlantic/Roger Tym & Partners
Professor Colin Price
Paul Sandys



**SOUTH WEST ENGLAND
FORESTRY AND WOODLAND
STRATEGIC ECONOMIC STUDY**

**For The Forestry Commission
(South West England Conservancy)
and
South West of England
Regional Development Agency**

**By
Land Use Consultants
Assisted by
Eamonn Wall & Co
Paul Sandys
Atlantic/Roger Tym & Partners
&
Professor Colin Price**

October 2002

14 Great George Street
Bristol BS1 5RH
Tel: 01179 291997
Fax: 01179 291998
luc@bristol.landuse.co.uk

CONTENTS

	Pages I-viii
EXECUTIVE SUMMARY	
Introduction	i
The Resource	i
Summary of Economic Benefits	i
Multipurpose Use of Woodlands and Forest	ii
Other Environmental Issues	iii
The Forestry and Timber Industry	iii
Consultation	v
Policies and Grants	v
Findings and Recommendations	v
I. INTRODUCTION	I
The Study Brief	1
Background to the Study	2
Regional Context	2
Layout of the Report	4
Key Issues Identified in Chapter 1	5
2. WOODLAND AND FORESTRY RESOURCES	7
Introduction	7
Data Sources	7
Extent Of Woodland Cover	7
Ownership	8
Woodland Size	11
Woodland Type	13
Species Composition	13
Age Class Distribution	16
Variations In Landscape Character	18
Recreation	18
Woodland Management	19
Planting	20
Timber Harvesting And Production	21
Summary Of Findings	23
Key Issues Identified In Chapter 2	24
3. SUB-REGIONAL ANALYSIS OF THE RESOURCE	25
Introduction	25
Analysis At County And District Level	25
Sub Regional Variations	25
Woodland And Forestry In Former Avon	27
Woodland And Forestry In Cornwall	29
Woodland And Forestry In Devon	31
Woodland And Forestry In Dorset	33
Woodland And Forestry In Gloucestershire	35
Woodland And Forestry In Somerset	37
Woodland And Forestry In Wiltshire	39
Woodland And Forestry In National Parks	41
Woodland And Forestry Within AONBs	42

Principal Findings From Chapter 3	45
Key Issues Arising	45
4. WOODLAND AND FORESTRY INDUSTRY	47
Introduction	47
SECTION 1: The Wood-Chain	48
SECTION 2: Review of National Data Sources	48
SECTION 3: Industrial Structure and Employment	51
Employment By Industry Sector In England	51
Regional Variations In Forestry Industry Employment	53
Employment In The South West Region	54
Analysis By County And Districts	56
Review Of Data Sets	59
Analysis Of Regional Sources Of Data	60
SECTION 4: Primary Processing	62
SECTION 5: Markets and Marketing	65
Principal Findings From Chapter 4	69
Key Issues Arising From Chapter 4	70
5. MULTIPLE USE OF WOODLAND AND FORESTS	71
Introduction	71
Assessing Informal Recreational Use	71
Organised Sport	76
Off-Road Cycling	77
Motor Sports	78
Orienteering	79
Paintballing	80
Horse Riding	81
Field Sports	82
Educational Activities	86
Holiday Accommodation	87
Public Health And Quality Of Life	88
Who Benefits from the Indirect Economic Returns of Woodland and Forestry?	92
Summary Of Main Findings From Chapter 5	94
Key Issues Arising	94
6. POLICES AND GRANTS	97
Introduction	97
SECTION A: The Role Of Policies, Plans And Programmes	97
The England Forestry Strategy	97
Review Of Regional Planning Guidance	102
Review Of Sustainability South West	102
County Sustainability Framework Plans	103
Local Agenda 21	103
Community Forest Initiatives	104
The South West Forest	105
National Park Plans	105
Areas Of Outstanding Natural Beauty	107
County Economic Development Strategies	108
Other Initiatives	109
Integrated Rural Development	110
FMD Recovery Plans	111

SECTION B: Review Of Funding Mechanisms	113
European Funding Programmes	113
National And Local Grants	115
Key Issues Arising	121
7. CONSULTATIONS	123
Introduction	123
Contributing Organisations	125
Responses	137
Education And Training	139
Key Issues Arising	135
8. DEVELOPING AN ECONOMIC MODEL OF THE WOODLAND AND FORESTRY SECTOR	143
Introduction	143
Qualifications On Methods And Data	143
Approach To Modelling	144
Constructing The Model	145
Components Of The Model	145
Direct Values Of Timber Production	146
Indirect Values Of Timber Production	148
Other Economic Uses Of Woodland And Forestry	149
Non Timber Environmental Costs And Benefits	152
Environmental Costs And Benefits	158
Summarising The Information	159
Conclusions	161
Key Issues Arising	162
9. CONCLUSIONS AND RECOMMENDATIONS	163
Introduction	163
Responding To The England Forestry Strategy	163
SECTION A: General Policies	164
SECTION B: Specific Recommendations On Timber Production	169
SECTION C: Specific Recommendations On Timber Processing	171
SECTION D: Maximising The Economic Value Of Multi-Purpose Uses Of Woodland	175
SECTION E: Environmental Costs And Benefits	178

TABLES

I	Summary of Economic Benefits	ii
2.1	Forest Enterprise Management Statistics (Year to March 2001)	19
2.2	Non FE Harvesting Activity for 1999-2000	22
2.3	Estimated Total Harvesting Activity in the South West Region in 2000/01	22
4.1	Changes in Employment by Sector in England, 1998-1999	51
4.2	Employment in Forestry by English Region (1998/99)	53
4.3	Employment by Activity – Estimate for South West Region, Based on pro rata Allocation from English Data	54
4.4	Employment by Sector in England with a pro rata Breakdown for the South West Region	55
4.5	Forestry Related Workplaces in the South West and England	57

4.6	Employment in Forest Related Industries	58
4.7	Number of Workplaces in Forestry and Saw Milling by County	59
4.8	Number of Employees in Forestry and Sawmilling by County	59
4.9	Breakdown of Services offered by Companies recorded in the South West Regional Directory	61
4.10	Relevant Business Listings in the South West (Yellow Pages)	62
5.1	Number of Leisure Day Trips made in Great Britain in 1998	72
5.2	Average Expenditure on Leisure Day Trips in Great Britain in 1998	73
5.3	Total Trips in South West Region by Resident Population (in Millions of Trips per annum)	74
5.4	Visits and Expenditure Associated with Woods and Forests in the South West Region	76
5.5	Estimate of Total Economic Activity in Off-Road Cycling in South West Woodland and Forests	78
5.6	Estimate of Total Economic Activity in Motor Sports in South West Woodland and Forests	79
5.7	Estimate of Total Economic Activity in Orienteering in South West Woodland and Forests	80
5.8	Estimate of Total Economic Activity in Paintball/Combat Games in South West Woodland and Forests	81
5.9	Estimated Numbers of Horse Riders in England	82
5.10	Number of Shotguns Covered by Certificates in Force on 31 December 1999 in South West England	84
5.11	Shotgun Permits Issued to Visitors in the South West in 1999	84
5.12	Estimates of Total Expenditure on Shooting and Stalking for Great Britain and South West England	86
5.13	Children of School Age Within the South West	87
5.14	Typical Performance of a Holiday Centre in the Centre Parcs Group	88
5.15	Mortality Amongst Males from Coronary Heart Disease (Age Specific Death Rates per 100000, 1997 to 1999 pooled)	89
5.16	Mortality Amongst Males from Coronary Heart Disease (Age Specific Death Rates per 100000, 1997 to 1999 by District in the South West)	90
5.17	Assumed Distribution of Deaths in Male Population if this Group Ceased Exercising in Woodlands and Forests in the South West	91
6.1	Payments under the Farm Woodland Premium Scheme	117
7.1	Organisations and Individuals Contacted in the Course of the Study	123
8.1	Estimated Gross Output, Employment and Net Output Impact of the Forestry and Processing Sector	149
8.2	Estimates of Total Annual Value for South West Woods and Forests	160

FIGURES

2.1	Woodland and Forestry in the SW Region	9
3.1	Local Authority Areas in South West England	26
3.2	Woodland in the former Avon area	28
3.3	Woodland in Cornwall	30
3.4	Woodland in Devon	32
3.5	Woodland in Dorset	34
3.6	Woodland in Gloucestershire	36
3.7	Woodland in Somerset	38
3.8	Woodland in Wiltshire	40
4.1	Links between Primary Production and Secondary and Tertiary Processing	49
4.2	Relationship between Forest Products and Primary Processing	50
4.3	Comparison of Sawmill Listings from Three Independent Sources	64
8.1	The Basic Forestry Model	145
8.2	Links in the Wood Chain	147

CHARTS

2.1	Historic Tree Cover in the South West	8
2.2	Ownership of Woodland and Forests in the South West by Area	10
2.3	All Woodlands and Forests in South West England Grouped by Size Class	12
2.4	Proportion of Overall Woodland and Forestry Cover Falling with Different Size Classes in ha in South West England	12
2.5	Area of Woodland by Forest Type (FC Ownership)	13
2.6	Area of Woodland by Forest Type (Non-FC Ownership)	13
2.7	Composition of Conifer Woodland by Species in South West England	14
2.8	Composition of Broadleaved Woodland by Principal Species in South West England	14
2.9	Composition of Conifer Woodland Managed by Forest Enterprise in South West England	15
2.10	Composition of Conifer Woodlands in Non-FE Ownership	15
2.11	Composition of Broadleaved Woodlands Managed by Forest Enterprise	16
2.12	Composition of Broadleaved Woodlands in Non-FE Ownership	16
2.13	Age of Stands Within Conifer Woodlands in South West England	17
2.14	Age of Stands Within Broadleaved Woodlands in South West England	17
2.15	Non FE New Planting	20
2.16	Non FE New Planting by Land Type	20
2.17	Approved Thinning and Felling of Broadleaves (99/00)	21
2.18	Approved Thinning and Felling of Conifers (99/00)	21
3.1	Regional Tree Cover	25
3.2	Percentage Tree Cover in the Former Avon Area	27
3.3	Area of Woodland by Forest Type in the Former Avon Area	27
3.4	Percentage Tree Cover in Cornwall	29
3.5	Area of Woodland by Forest Type in Cornwall	29
3.6	Percentage Tree Cover in Devon	31
3.7	Area of Woodland by Forest Type in Devon	31
3.8	Percentage Tree Cover in Dorset	33
3.9	Area of Woodland by Forest Type in Dorset	33
3.10	Percentage Tree Cover in Gloucestershire	35
3.11	Area of Woodland by Forest Type in Gloucestershire	35
3.12	Percentage Tree Cover in Somerset	37
3.13	Area of Woodland by Forest Type in Somerset	37
3.14	Percentage Tree Cover in Wiltshire	39
3.15	Area of Woodland by Forest Type in Wiltshire	39
3.16	Woodland Types within Exmoor and Dartmoor	41
3.17-30	Composition of Woodland and Forestry in South West AONBs	42
4.1	Changes in Employment by Sector in England, 1998-1999	51
4.2	Harvesting of Roundwood (000's Green Tonnes) by Forest Enterprise and Private Owners in England (1994-2000)	52
4.3	Percentage Employment and Proportion of Total Forest Area in England by English Region	53
4.4	Employment Provided in Forestry and Subsequent Activities	55
4.5	Numbers of Full Time Job Equivalents by Employment Sector in the South West Region	56
4.6	Workplaces in Forestry Related Industries by County	58

**Forestry Commission****South West of England**
Regional Development Agency

This study is an independent report, commissioned by The Forestry Commission and the South West of England Regional Development Agency.

Traditionally, forestry's economic measures have focussed on the timber supply chain, but have ignored wider economic benefits. This study examines and evaluates the overall contribution that woodlands and forestry make to the South West regional economy. It evaluates the important timber-based industry but recognises forestry's very much wider economic contribution, (e.g. through tourism and leisure).

The Forestry Commission and SW RDA were pleased to commission the study, which we see as a beginning rather than an end in itself. We are pleased to have had the support of particular partners listed below, and are grateful not only for their financial help, but also for their contributions through the steering group.

The idea for the report came from the partners themselves. From initial discussions, the need for an independent regional analysis became clear. We are grateful to partners for their original suggestion and for their enthusiastic support throughout. Equally, we are grateful to Land Use Consultants and their own partners for undertaking the study, and to all those individuals and organisations who contributed to it.

Whilst all partners have supported preparation of the study, it should be noted that the Consultants have drawn on a wide range of expertise and comment in its preparation. The study is independently researched and prepared, and the views, comments and recommendations contained within it cannot be attributed to any individual partner.

Forestry Commission
South West England Conservancy
Mamhead Castle
Mamhead
EXETER EX6 8HD

SW RDA
Sterling House
Dix's Field
EXETER
EX1 1QA

Tel 01626 890666
Fax 01626 891118
E mail fc.sweng@forestry.gsi.gov.uk

Tel 01392 214747
Fax 01392 214848
E mail enquiries@southwestrda.org.uk

Co-funding Partners

Cornwall County Council
Forest of Avon
Great Western Community Forest
Silvanus Trust
South West Forest
Forestry and Timber Association
Woodland Trust